

Parks Committee  
Agenda Jefferson County

Date: Monday, May 3, 2021  
Time: 9:00 a.m.

Committee Members: Walt Christensen, Greg David, Jeff Johns, Mike Kelly, Jeff Smith

Videoconference OR  
Jefferson County Courthouse  
311 S. Center Ave, Rm 205  
Jefferson, WI 53549

Join Zoom Meeting

<https://zoom.us/j/99587095043?pwd=VW96SVhDVUxLdm9DV0VXQ3UvckpPdZ09>

Meeting ID: 995 8709 5043

Passcode: 095563

Dial by your location

+1 312 626 6799

1. Call to order
2. Roll call (establish a quorum)
3. Certification of compliance with the Open Meetings Law
4. Approval of the agenda
5. Approval of Park Committee Minutes for April 4, 2021
6. Communications
7. Public Comment (Members of the public who wish to address the Committee on specific agenda items must register their request at this time)
8. Discussion and Possible Action on Resolution to authorize a Stewardship Grant Application for Repair of the Glacial River Trail South of Fort Atkinson.
9. Discussion and Possible Action on Resolution to authorize a Stewardship Grant Application for Design, Engineering, Construction of Phase II.2 of the Interurban Trail (Watertown to Oconomowoc).
10. Discussion and Possible Action on Resolution to authorize a Stewardship Grant Application for Paving of Phase I.1 of the Interurban Trail (Watertown to Oconomowoc).
11. Discussion on Development of a Green Space Buffer for the DeYoung Neighborhood Development East of the Garman Nature Preserve.
12. Update and Discussion on Interurban Trail – Status Update.
13. Update and Discussion on Volunteer Projects in Jefferson County Parks.
14. Update and Discussion on Annual Fundraising – Brew with a View (Tentative Dates, Possible Restrictions, Fund Raising).
15. Discussion and possible action on creating a Flood Mitigation Property Land Use Policy
16. Discussion on 2021 Parks Department Budget.
17. Next scheduled meeting: June 7, 2021  
July 6, 2021
18. Adjourn

A Quorum of any Jefferson County Committee, Board, Commission or other body, including the Jefferson County Board of Supervisors, may be present at this meeting.

Individuals requiring special accommodations for attendance at this meeting should contact the County Administrator 24 hours prior to the meeting at 920-674-7101 so appropriate arrangements can be made.

## Parks Committee Meeting Minutes

Date: Monday, April 5, 2021

Time: 9:00 a.m.

Jefferson County Courthouse, Room 205 and virtual via

<https://zoom.us/j/99587095043?pwd=VW96SVhDVUxLdm9DV0VXQ3UvckpPdZ09>**1. Call to order**

Johns called the meeting to order at 9:02 am.

**2. Roll call (establish a quorum)**

Present: Christensen, Johns, Smith, David (remote), Kelly (remote)

Absent:

Staff Present: Kevin Wiesmann Parks Interim Director, Mary Truman Parks Program Assistant, Rolland Klement Parks Lead, Benjamin Wehmeier County Administrator, Blair Ward Corporation Counsel, Brian Udovich Highway, Donna Haugom Emergency Management, Whitney DeVoe Corporation Counsel

Other's Present: Frankie Fuller GHA (remote), Nicole Bowman – Item #8, Ben Bowman – Item #8, Michelle Hartung – Item #8, Larry Hartung – Item #8, Brian Clever – Item #8

**3. Certification of compliance with the Open Meetings Law**

Wehmeier confirmed compliance.

**4. Approval of the agenda**

Smith/Christensen motion to approve the agenda as written. Motion approved 5/0.

**5. Approval of Park Committee Minutes for March 1, 2021**

Christensen/Smith motion to approve the minutes of March 1, 2021

**6. Communications**

Wiesmann – noted that the first parks quarterly newsletters was distributed in the employee newsletter, and that staff had been given High 5's by the Sheriff's Office in the employee newsletter.

**7. Public Comment (Members of the public who wish to address the Committee on specific agenda items must register their request at this time)**

Michelle Hartung – N2094, interested in leasing the property between their home and the VFW and the N2080, N2090. Wrote letter in 2019 inquiring about the property.

Larry Hartung – thanked Wiesmann for open communication. Intention is to keep lot as is as natural wildlife.

Ben Bowman – bar manager at VFW, member and club officer, gravel/blacktop would detract from the value of the property.

**8. Discussion and possible action on establishing terms for the lease of County owned flood mitigation property**

Ward – on agenda at his request. Property purchased using federal funds. County is limited to what the lots can be used for. There has been discussion about leasing the properties. Most recent email from Haugom regarding the VFW. Looking for comment/concerns related to leasing said properties. Draft lease has been created, looking for guidance on rate/terms/etc.

Wehmeier – competing interest(s) in land use(s) for some of the Flood Mitigation Properties.

Christensen – least impactful use shall be priority.

Wiesmann – planning document with guidance would provide a process for authorizing leases.

Wehmeier – money has been set aside for the planning process.

Smith – current maintenance on the property (listed above)?

Hartung – maintain the lots between the VFW and their home. Ask to continue to be informed of the planning process.

Hartung – have no problems maintaining lots – mow, trash, trees limbs, etc.

Christensen/Johns motion for staff and Emergency Management to work with Ward to draft process and lease agreement draft. Motion passes 5/0

Wiesmann – EM should be a participant in the process

9. **Discussion and Possible Action on Distribution of Natural Resources Foundation Annual Funds**  
Wiesmann – noted that there are two funds designated for dept through the Natural Resources Foundation – Molinaro Tree Fund (\$544.46). Using funds for purchase of tree tubes and stakes, and Endowment Fund, approximately \$940 year, recommend placing this year’s funds into the Interurban project account.
10. **Discussion and Possible Action on Change status of Interurban Stewardship Grant**  
Wiesmann – likely seeking to reduce the grant amount from \$655 to \$249,999, award stuck in the Joint Finance Committee and may reduce the request lowering it under the threshold.  
Wehmeier – passive review process through Joint Finance, if comments or questions, the project can be placed on hold. Several larger projects have been on hold for more than a year, with no movement. If we reduce award request, we will be awarded the funds versus waiting. Balancing approaches for best possible funding outcome.  
Johns/Kelly move forward on plan of reducing request to \$249, 999. Motion passes 5/0.
11. **Discussion Rock River Landing Grand Opening**  
Wiesmann – ribbon cutting ceremony scheduled for April 10, 2021 @ noon
12. **Discussion on 2021 Turkey Hunt at Dorothy Carnes Park**  
Wiesmann – Carnes North obligation with Stewardship to provide opportunities for the nature based outdoor recreation activities of hunting/trapping/fishing/hiking. The department is offering a three-period hunt for turkey this year.  
Christensen – is there a benefit to the park for the hunt? Is there an impact to other users of the park?  
Wiesmann – notices are posted throughout the park to notify all park users of “hunt”.
13. **Discussion and Update on Volunteer Projects**  
Wiesmann – Jensen Heating and Plumbing with staff volunteers – performed trash clean-up on the Glacial River Trail, also helped in two other parks with clean-up. A listing of volunteer days is included in the packet.
14. **Discussion and Possible Action on the Purchase of a Parcel of Real Property in the Town of Koshkonong**  
Wiesmann – could partner if City of Fort Atkinson was interested in creating a park on the said parcel. At this time, the City is not interested in converting it to a park and would like to see it as residential.
15. **Discussion on Glacial Heritage Area (GHA) – Friends of GHA Activity Update**  
Fuller – Friends just doing administrative activities at this time.
16. **Discussion on Status of Department Staffing**  
Johns – challenges and opportunities with open staffing  
Wiesmann – summer seasonal/6-month positions have been filled by retired individuals with skills. ½ time office position open. Seasonal positions are valuable, but hard to fill.
17. **Discussion on 2021 Parks Department Budget**  
Wiesmann – budget on track, annual Capital items have been ordered and/or purchased.
18. **Next scheduled meeting:**      May 3, 2021  
   June 7, 2021  
   July 6, 2021
19. **Adjourn**  
Christensen/Smith motion to adjourn at 10:00 am. Motion passes 5/0

Respectfully submitted,

*Mary S. Trueman*  
Program Assistant, Parks



The ribboncutting for the Rock River Landing Park at the old county highway shop site in Jefferson took place last Saturday, April 10. Pictured above at the official ribboncutting are, from left to right: City of Jefferson Parks and Recreation Director Cyndi Keller; City of Jefferson Parks and Recreation Commissioner Dick Kassner; Jefferson City Engineer Bill Pinnow; Jefferson County Board of Supervisors member Amy Rinard; Wisconsin state Senator Steve Nass; Jefferson City Administrator Tim Freitag; Jefferson County Administrator Ben Wehmeier; Jefferson Mayor Dale Oppermann; Wisconsin Department of Natural Resources representative Jim Ritchie; DNR rep Cheryl Housley; Mary Truman of the Jefferson County Parks Department; Brian Udovitch of the Jefferson County Highway Department; and Walt Christenson, Jefferson County Board member and parks committee representative.

Contributed

**JEFFERSON** — A couple of years ago, the former Jefferson County Highway department site was full of gravel, concrete and debris of old buildings.

Now the area has just been transformed into a new park, dedicated to opening up greenspace in the center of town and providing access to the Rock River for walkers, boaters and fishers.



The new park is located at 424 North Elizabeth Ave.

There's a trail along the river, a boat launch, a kayak launch similar to the one at Rotary Waterfront Park, a fishing area and a dock area with a mooring pier where visiting boats can tie up for a couple of hours, allowing people to stop and enjoy lunch in town, for example.

The park also includes a main parking lot and a separate parking area for the boat launch, and a connection to the Glacial Drumlin Trail.

Working together on this process were the City of Jefferson and Jefferson County, with essential cooperation from the Wisconsin Department of Natural Resources.

The project was supported by two major grants, a Knowles-Nelson Stewardship Grant in the amount of \$434,800 and a \$117,575 Recreational Boating Facilities grant.

Both grants provided 50 percent matches, requiring an infusion of local funds as well.

Jefferson County continues to own the land, and the new 4-acre park is considered a joint county-city venture, the first of its kind.

County planners were relieved a few years ago to move the highway department to a new, more expansive and more accommodating site on the southern edge of Jefferson.

But because the old highway department site was located in a floodplain, strict rules regulated what could be developed in its place.

Thus, city and county planners worked together to turn what could have been an eyesore into an asset.

Right alongside the Rock River, the old highway department site was a great place for a park, improving the look of the whole riverside.

And the new park provided an opportunity for the city to put in a new street, a continuation of North Elizabeth Ave., which will ultimately facilitate desirable development across the street from the newly dedicated park, Keller said.

“We couldn’t include the cost of the street in the grant, so the city paid for that,” Keller said.

Meanwhile, the county put up the funds to match the grants from the state.

While not all of the numbers are yet in, the project is valued at around \$1.1 million overall.

“This has been in the works a long time,” said Cyndi Keller, Jefferson parks and recreation director.

The planning timeline began around May 2018 with the city and county working with a DNR rep on grant applications.

The grant cycle that planners were trying for started in February 2019.

The grants sought for this project were large enough they had to go through the state’s Joint Finance Committee, and state Senator Steve Nass helped with that part of the process.

The grants stipulated that the project needed to be completed by June of this year.

“The pandemic put a little wrench in the process early on, but we are essentially done other than a couple of little details,” Keller said.

The city extended the street right away, taking the opportunity to extend water and sewer connections along with it.

Then collaborations began on the park itself.

The county highway department did the grading of the site, while the City of Jefferson took on the grant-writing.

Thus, the city also controlled the contract for construction on the site, overseen by Yanke Construction of Athens, which had also worked on the city’s Riverwalk.

Meanwhile the city and county hammered out an intergovernmental pact laying out which entity would be responsible for which aspects of the project and stipulating how the park would be run and maintained into the future.

The R.A. Smith Design/Engineering Firm handled the permitting for the DNR and plans for grading, parking, electrical connections, etc.

“Right now, the park is about 90 percent completed,” Keller said. “There’s some landscape work to finish – stumps to grind out and trees to plant.”

In addition, there are already plans in the works to improve the park in the near future with a shelter, which was not included in the original budget.

The county and city are working on a fundraising effort to garner the funds to put in a shelter down the line to serve the public.

Other future improvements could include a playground, since there isn’t much in this area for town in terms of children’s play areas.

As the park moves forward, the city will oversee the daily maintenance such as mowing and the upkeep of the boat launch, which is supported by user fees.

The city is offering an annual sticker pass for people to use the boat launch.

“The boat launch fees will go into a separate fund,” Keller said. “We’ll keep that and use it toward improvements to the boat launch.”

**The dedication**A formal ribbon cutting ceremony for the new park took place Saturday, April 10, featuring a series of speeches about the project.

Jefferson Mayor Dale Oppermann started off with a welcome speech. Then Jefferson County Administrator Ben Wehmeier and State Rep. Steve Nass offered up remarks, followed by a few final comments from Oppermann and finally the ribbon cutting ceremony.

“We are just excited to be part of this collaborative effort,” Keller said. “If you look at what this area looked like three years ago, this is a major transformation, and it’s only going to get better.”

“We feel this is a crucial part of the economic development of this area,” Wehmeier said.

He said that the park offered a great way to “reuse” a worn-out space and open this area back up to the public, while the new street makes way for new higher end development across from the park.

“This project cleaned up the old site, allowed us to share costs and create a public benefit,” Wehmeier said.



The county administrator tipped his hat to the many planners who contributed, from retired parks director Joe Nehmer who had the initial vision for this project to current parks manager Kevin Wiesmann to employees Mary Truman and Brian Udovich.

On behalf of the DNR, Ritchie said that people really value outdoor recreation and this new park will help connect more people with these opportunities, both at the park itself and along the Rock River.

“There has been increasing demand in recent years for recreational boating facilities like these,” he said.

When it contained the old highway department buildings, this neighborhood provided no access to the river. Now, he said, it offers up that access and improves the appearance of the area with beautiful greenspace.”

The state DNR rep commended the city and county for working together for the benefit of all, in conjunction with grant funding that allowed things to come together much more swiftly than they otherwise would have.

**RESOLUTION NO. 2021-\_\_****Authorizing Wisconsin Department of Natural Resources Stewardship Program, Federal Recreational Trails Program, and Land & Water Conservation Fund grant application and acceptance**Executive Summary

The Glacial River Trail is a 52 mile bike bath and route system that links communities along the Rock River and the heart of the Glacial Heritage Area of Dodge, Jefferson and Rock Counties. The trail is heavily used by the handicapped, walkers, cyclists, runners, and dog walkers of all ages during all seasons. A portion of the Glacial River Trail, approximately 500 feet south of Lake Koshkonong and south of Fort Atkinson, has been sinking since the expansion of the west side of State Highway 26 in 2014. In 2020, Jefferson County repaired the sinking area of the trail by placing a temporary crushed asphalt surface on this portion of the trail. Jefferson County is now seeking grant funds to aid with the costs repairing the asphalt layer on this section of trail. This resolution authorizes the County Administrator to apply for, and if awarded, to accept grant funds up to \$2,500 for the purpose of repairing this section of the Glacial River Trail. The Parks Committee considered this resolution at its meeting on May 3, 2021, and recommends forwarding to the County Board for approval.

---

WHEREAS, the Executive Summary is incorporated into this resolution, and

WHEREAS, A portion of the Glacial River Trail, approximately 500 feet south of Lake Koshkonong and south of Fort Atkinson, has been sinking since the expansion of the west side of State Highway 26 in 2014 and is in need of repair, and

WHEREAS, Jefferson County has made several temporary repairs to the trail,, and

WHEREAS, Jefferson County has taken steps to permanently repair the damaged section of trail by removing the buried organic material that was decomposing and compressing under the path, and

WHEREAS, the Parks Committee recommends seeking additional grant funds from the Wisconsin Department of Natural Resources Stewardship program; the Recreational Trail Program (RTP); and the Land & Water Conservation Fund (LAWCON) to be applied toward a long-term repair of the trail, and

WHEREAS, the Parks Department will complete repair of the trail, and

WHEREAS, this grant application is required to be accompanied by a resolution from the County Board supporting this project.

NOW, THEREFORE, BE IT RESOLVED that the Parks Department is authorized to seek funding from the Wisconsin Department of Natural Resources Stewardship Program; the Federal Recreational Trail Program; and the Land & Water Conservation Fund for the repair of the Glacial River Trail, and if grant funds are awarded, the County Administrator is authorized to accept these grant funds, sign the grant contracts, and perform all other duties necessary to comply with and fulfill the grant provisions.

*Fiscal Note: If the county is awarded the Stewardship grant as described above, the Finance Director is authorized to deposit these funds in the designated account for use as described in this resolution. This is a budget amendment. County Board approval requires a two-thirds vote of the entire membership of the County Board (20 votes of the 30 member County Board).*

Ayes\_\_\_\_\_ Noes\_\_\_\_\_ Abstain\_\_\_\_\_ Absent\_\_\_\_\_ Vacant\_\_\_\_\_

Requested by  
Parks Committee

05-11-21

REVIEWED: County Administrator\_\_\_\_\_; Corporation Counsel \_\_\_\_; Finance Director \_\_\_\_

**RESOLUTION NO. 2021-\_\_****Authorizing Wisconsin Department of Natural Resources Stewardship, Federal Recreational Trails Program and Land & Water Conservation Fund grant application and acceptance**Executive Summary

The Jefferson County Parks Department is in the process of constructing a recreation trail for hiking, biking and cross-country skiing on utility right-of-way owned by We Energies. The proposed trail is 10.96 miles and is located on the former interurban rail line between the City of Watertown and the City of Oconomowoc. The path cross-section will consist of a 10-foot wide asphalt surface with 2-foot wide aggregate shoulders. An 8-inch stone base with 3.5-inch asphalt layer will be used. The project is located primarily in Jefferson County with 10 miles of trail and a portion in Waukesha County with 1 mile of trail. The City of Watertown and the City of Oconomowoc are the project boundaries. The Parks Committee considered this resolution at its meeting on May 3<sup>rd</sup>, 2021, and recommends forwarding to the County Board for approval.

---

WHEREAS, the Executive Summary is incorporated into this resolution, and

WHEREAS, the Parks Committee has expended significant time and effort towards establishing a multi-use trail from Watertown to Oconomowoc, and

WHEREAS, the cost of paving the trail from Highway P to Highway F in the Town of Ixonia is approximately \$1.1 Million, and

WHEREAS, the Parks Committee has received a Wisconsin Department of Transportation (TAP) Transportation Alternative Program grant of \$1,102,840 for plan review, construction, and construction review, and

WHEREAS, the Parks Committee recommends seeking grant funds from the Wisconsin Department of Natural Resources Stewardship, Recreational Trail Program (RTP), and Land & Water Conservation Fund (LAWCON) to fund up to 50% of project design/engineering which is expected to begin in 2022, and

WHEREAS, the Parks Committee recommends completion of these multi-purpose trails as part of the County's Bikeway/Pedestrianway Plan, the Jefferson County Comprehensive Plan and the Glacial Heritage Area Plan, and

WHEREAS, this grant application is required to be accompanied by a resolution from the County Board supporting this project.

NOW, THEREFORE, BE IT RESOLVED that the Parks Department is authorized to seek funding from the Wisconsin Department of Natural Resources Stewardship, Federal Recreational Trail Program and Land & Water Conservation Fund for this multi-use recreational trail from Watertown to Oconomowoc, and if grants are awarded in sufficient amounts to help pay the cost of

such construction, the County Administrator is authorized to accept said grants, sign the grant contracts and perform all other duties necessary to comply with and fulfill the grant provisions.

*Fiscal Note: If the County is awarded the Stewardship grant described above, the Finance Director is authorized to increase budget accounts 12810.421099 (Bike Trails - Capital State Aid) and 12810.594829 (Bike Trails – Capital Improvement – Other) in the amount of up to \$249,999. No tax levy is required for this request. This is a budget amendment. County Board approval requires a two-thirds vote of the entire membership of the County Board (20 votes of the 30 member County Board).*

Ayes \_\_\_\_\_ Noes \_\_\_\_\_ Abstain \_\_\_\_\_ Absent \_\_\_\_\_ Vacant \_\_\_\_\_

Requested by  
Parks Committee

05-11-21

REVIEWED: County Administrator\_\_\_\_; Corporation Counsel \_\_\_\_; Finance Director \_\_\_\_

**RESOLUTION NO. 2021-\_\_\_****Authorizing Wisconsin Department of Natural Resources Stewardship, Federal Recreational Trails Program and Land & Water Conservation Fund grant application and acceptance**Executive Summary

The Jefferson County Parks Department is in the process of constructing a recreation trail for hiking, biking and cross-country skiing on utility right-of-way owned by We Energies. The proposed trail is 10.96 miles and is located on the former interurban rail line between the City of Watertown and the City of Oconomowoc. The path cross-section will consist of a 10-foot wide asphalt surface with 2-foot wide aggregate shoulders. An 8-inch stone base with 3.5-inch asphalt layer will be used. The project is located primarily in Jefferson County with 10 miles of trail and a portion in Waukesha County with 1 mile of trail. The City of Watertown and the City of Oconomowoc are the project boundaries. The Parks Committee considered this resolution at its meeting on May 3<sup>rd</sup>, 2021, and recommends forwarding to the County Board for approval.

---

WHEREAS, the Executive Summary is incorporated into this resolution, and

WHEREAS, the Parks Committee has expended significant time and effort towards establishing a multi-use trail from Watertown to Oconomowoc, and

WHEREAS, the cost of paving the trail from in the Humbolt Street Trailhead in Watertown to the Rock River crossing East of Highway F (1.5 Miles) is approximately \$220,000, and

WHEREAS, the Parks Committee recommends seeking grant funds from the Wisconsin Department of Natural Resources Stewardship, Recreational Trail Program (RTP), and Land & Water Conservation Fund (LAWCON) to fund up to 50% of this project which is expected to begin in 2022, and

WHEREAS, the Parks Committee recommends completion of these multi-purpose trails as part of the County's Bikeway/Pedestrianway Plan, the Jefferson County Comprehensive Plan and the Glacial Heritage Area Plan, and

WHEREAS, this grant application is required to be accompanied by a resolution from the County Board supporting this project.

NOW, THEREFORE, BE IT RESOLVED that the Parks Department is authorized to seek funding from the Wisconsin Department of Natural Resources Stewardship, Federal Recreational Trail Program and Land & Water Conservation Fund for this multi-use recreational trail from Watertown to Oconomowoc, and if grants are awarded in sufficient amounts to help pay the cost of such construction, the County Administrator is authorized to accept said grants, sign the grant contracts and perform all other duties necessary to comply with and fulfill the grant provisions.

*Fiscal Note: If the County is awarded the Stewardship grant described above, the Finance Director is authorized to increase budget accounts 12810.421099 (Bike Trails - Capital State Aid) and 12810.594829 (Bike Trails – Capital Improvement – Other) in the amount of up to \$220,000.00. Tax Levy is not anticipated for this project. This is a budget amendment. County Board approval requires a two-thirds vote of the entire membership of the County Board (20 votes of the 30 member County Board).*

Ayes\_\_\_\_\_ Noes\_\_\_\_\_ Abstain\_\_\_\_\_ Absent\_\_\_\_\_ Vacant\_\_\_\_\_

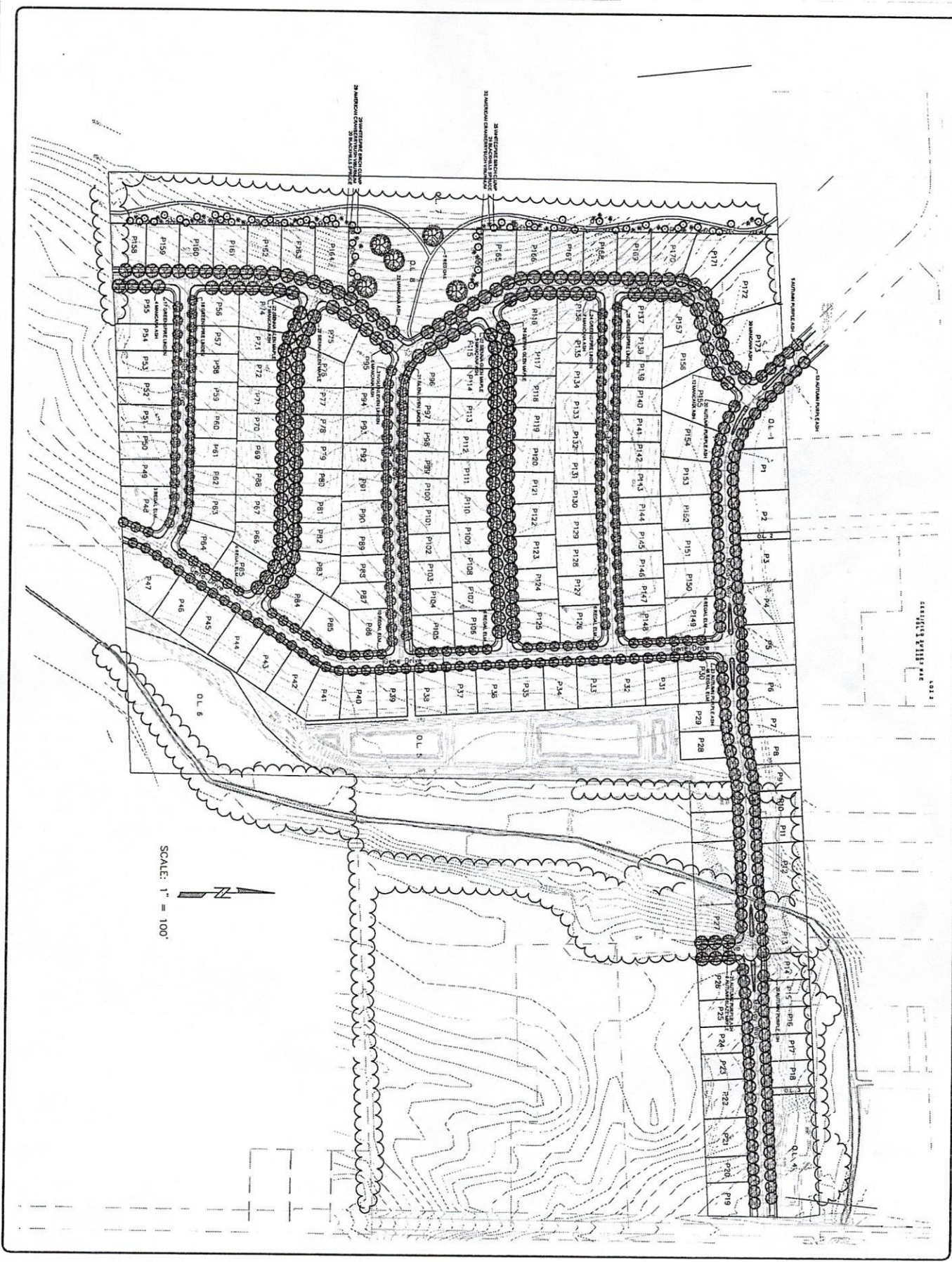
Requested by  
Parks Committee

05-11-21

REVIEWED: Administrator\_\_\_\_\_; Corporation Counsel \_\_\_\_; Finance Director \_\_\_\_







|          |              |
|----------|--------------|
| DATE     | 10/21/10     |
| BY       | W. J. GIBSON |
| REVISION | 08-27-10     |
| DATE     | 10/21/10     |
| BY       | W. J. GIBSON |

LANDSCAPE PLAN  
**DEYOUNG FARMS**  
 WATERLOO, WI



**McKAY NURSERY COMPANY**  
 PO BOX 185, 750 S. MONROE ST., WATERLOO, WI 53594  
 920-478-2121  
 WWW.MCKAYNURSERY.COM  
 RUDOLPH WEGAT NURSERY CO REPRESENTATIVE

The drawings remain the property of the undersigned and no use of it shall be made without their consent. The undersigned and the McKay Nursery Company assume no responsibility for accuracy of any information, material or quantity not set forth on this drawing.  
 We advise the client of the undersigned's liability to the client.  
 CALL YOUR LOCAL UTILITY

04/30/2021  
09:56:36

Jefferson County  
FLEXIBLE PERIOD REPORT

PAGE 1  
glflxrpt

FROM 2021 01 TO 2021 12

| ACCOUNTS FOR:                            | ORIGINAL APPROP | TRANFRS/ADJSTMTS | REVISED BUDGET | ACTUALS     | ENCUMBRANCES | AVAILABLE BUDGET | PCT USED |
|--|-----------------|------------------|----------------|-------------|--------------|------------------|----------|
| 100 General Fund                         |                 |                  |                |             |              |                  |          |
| <hr/>                                    |                 |                  |                |             |              |                  |          |
| 12801 Parks Department                   |                 |                  |                |             |              |                  |          |
| 12801 411100 General Property Taxes      | -759,845        | 0                | -759,845       | -253,281.64 | .00          | -506,563.25      | 33.3%    |
| 12801 421001 State Aid                   | -1,750          | 0                | -1,750         | .00         | .00          | -1,750.00        | .0%      |
| 12801 421099 Capital State Aid           | -10,000         | 0                | -10,000        | .00         | .00          | -10,000.00       | .0%      |
| 12801 457017 Park Shelter Rental Fees    | -11,900         | 0                | -11,900        | -8,115.10   | .00          | -3,784.90        | 68.2%    |
| 12801 457019 Park Shelter Deposits       | 0               | 0                | 0              | -8,050.00   | .00          | 8,050.00         | .0%      |
| 12801 457024 Camping Fees                | -40             | 0                | -40            | .00         | .00          | -40.00           | .0%      |
| 12801 457030 Credit Card Surcharge       | 0               | 0                | 0              | -239.90     | .00          | 239.90           | .0%      |
| 12801 471130 State Billed-Other          | -2,880          | 0                | -2,880         | -881.41     | .00          | -1,998.59        | 30.6%    |
| 12801 482011 Rent Garden Plots           | -550            | 0                | -550           | -465.00     | .00          | -85.00           | 84.5%    |
| 12801 482021 Camping Fee Other           | -500            | 0                | -500           | -75.83      | .00          | -424.17          | 15.2%    |
| 12801 483001 Sale Of County Property     | -20,000         | 0                | -20,000        | -13,935.00  | .00          | -6,065.00        | 69.7%    |
| 12801 485200 Donations Restricted        | 0               | 0                | 0              | -644.46     | .00          | 644.46           | .0%      |
| 12801 511110 Salary-Permanent Regular    | 74,894          | 0                | 74,894         | 26,353.51   | .00          | 48,540.25        | 35.2%    |
| 12801 511210 Wages-Regular               | 311,689         | 0                | 311,689        | 69,256.40   | .00          | 242,432.85       | 22.2%    |
| 12801 511210 22101 Wages-Regular         | 0               | 0                | 0              | 52.00       | .00          | -52.00           | .0%      |
| 12801 511220 Wages-Overtime              | 3,212           | 0                | 3,212          | 197.10      | .00          | 3,014.50         | 6.1%     |
| 12801 511240 Wages-Temporary             | 13,200          | 0                | 13,200         | 150.08      | .00          | 13,049.92        | 1.1%     |
| 12801 511330 Wages-Longevity Pay         | 564             | 0                | 564            | .00         | .00          | 564.00           | .0%      |
| 12801 512141 Social Security             | 30,268          | 0                | 30,268         | 7,156.86    | .00          | 23,111.14        | 23.6%    |
| 12801 512141 22101 Social Security       | 0               | 0                | 0              | 3.78        | .00          | -3.78            | .0%      |
| 12801 512142 Retirement (Employer)       | 22,516          | 0                | 22,516         | 6,202.53    | .00          | 16,313.47        | 27.5%    |
| 12801 512142 22101 Retirement (Employer) | 0               | 0                | 0              | 3.51        | .00          | -3.51            | .0%      |
| 12801 512144 Health Insurance            | 66,488          | 0                | 66,488         | 17,725.26   | .00          | 48,762.74        | 26.7%    |
| 12801 512144 22101 Health Insurance      | 0               | 0                | 0              | 14.61       | .00          | -14.61           | .0%      |
| 12801 512145 Life Insurance              | 93              | 0                | 93             | 18.78       | .00          | 74.22            | 20.2%    |
| 12801 512146 Workers Compensation        | 0               | 0                | 0              | 15,962.65   | .00          | -15,962.65       | .0%      |
| 12801 512148 Unemployment Compensation   | 5,000           | 0                | 5,000          | 4,353.00    | .00          | 647.00           | 87.1%    |
| 12801 512151 HSA Contribution            | 7,153           | 0                | 7,153          | 2,687.58    | .00          | 4,465.42         | 37.6%    |
| 12801 512173 Dental Insurance            | 5,116           | 0                | 5,116          | 1,334.04    | .00          | 3,781.96         | 26.1%    |
| 12801 512173 22101 Dental Insurance      | 0               | 0                | 0              | 1.56        | .00          | -1.56            | .0%      |
| 12801 521219 Other Professional Serv     | 10,155          | 23,600           | 33,755         | .00         | 9,451.00     | 24,304.00        | 28.0%    |
| 12801 531001 Credit Card Fees            | 0               | 0                | 0              | 1,069.68    | .00          | -1,069.68        | .0%      |
| 12801 531100 Permits Purchased           | 583             | 0                | 583            | .00         | .00          | 583.00           | .0%      |
| 12801 531303 Computer Equipmt & Software | 1,000           | 0                | 1,000          | 82.86       | .00          | 917.14           | 8.3%     |
| 12801 531311 Postage & Box Rent          | 400             | 0                | 400            | 73.34       | .00          | 326.66           | 18.3%    |
| 12801 531312 Office Supplies             | 2,000           | 0                | 2,000          | 198.09      | .00          | 1,801.91         | 9.9%     |
| 12801 531313 Printing & Duplicating      | 1,000           | 0                | 1,000          | 46.88       | .00          | 953.12           | 4.7%     |
| 12801 531314 Small Items Of Equipment    | 6,400           | 0                | 6,400          | 3,421.00    | .00          | 2,979.00         | 53.5%    |

04/30/2021  
09:56:37

Jefferson County  
FLEXIBLE PERIOD REPORT

PAGE 2  
glflxrpt

FROM 2021 01 TO 2021 12

| ACCOUNTS FOR:                            | ORIGINAL | TRANFRS/ | REVISED  | ACTUALS    | ENCUMBRANCES | AVAILABLE   | PCT   |
|--|----------|----------|----------|------------|--------------|-------------|-------|
| 100 General Fund                         | APPROP   | ADJSTMTS | BUDGET   |            |              | BUDGET      | USED  |
| 12801 531320 Safety Supplies             | 1,400    | 0        | 1,400    | 428.79     | .00          | 971.21      | 30.6% |
| 12801 531324 Membership Dues             | 500      | 0        | 500      | .00        | .00          | 500.00      | .0%   |
| 12801 531326 Advertising                 | 1,800    | 0        | 1,800    | 730.25     | .00          | 1,069.75    | 40.6% |
| 12801 531346 Clothing & Uniform          | 900      | 0        | 900      | .00        | .00          | 900.00      | .0%   |
| 12801 531348 Educational Supplies        | 100      | 0        | 100      | .00        | .00          | 100.00      | .0%   |
| 12801 531351 Gas/Diesel                  | 20,000   | 0        | 20,000   | 5,186.26   | .00          | 14,813.74   | 25.9% |
| 12801 532325 Registration                | 2,395    | 0        | 2,395    | 20.00      | .00          | 2,375.00    | .8%   |
| 12801 532332 Mileage                     | 2,000    | 0        | 2,000    | 6.30       | .00          | 1,993.70    | .3%   |
| 12801 532335 Meals                       | 200      | 0        | 200      | .00        | .00          | 200.00      | .0%   |
| 12801 532336 Lodging                     | 900      | 0        | 900      | .00        | .00          | 900.00      | .0%   |
| 12801 532339 Other Travel & Tolls        | 30       | 0        | 30       | .00        | .00          | 30.00       | .0%   |
| 12801 533221 Water                       | 75       | 0        | 75       | 56.00      | .00          | 19.00       | 74.7% |
| 12801 533222 Electric                    | 2,500    | 0        | 2,500    | 301.18     | .00          | 2,198.82    | 12.0% |
| 12801 533223 Sewer                       | 0        | 0        | 0        | 53.33      | .00          | -53.33      | .0%   |
| 12801 533225 Telephone & Fax             | 595      | 0        | 595      | 246.84     | .00          | 348.16      | 41.5% |
| 12801 533236 Wireless Internet           | 300      | 0        | 300      | 45.06      | .00          | 254.94      | 15.0% |
| 12801 535232 Graveling                   | 1,500    | 0        | 1,500    | .00        | .00          | 1,500.00    | .0%   |
| 12801 535242 Maintain Machinery & Equip  | 12,500   | 0        | 12,500   | 7,949.83   | .00          | 4,550.17    | 63.6% |
| 12801 535245 Grounds Improvements        | 30,450   | 0        | 30,450   | 244.95     | .00          | 30,205.05   | .8%   |
| 12801 535247 Building Repair & Maint     | 3,000    | 0        | 3,000    | .00        | .00          | 3,000.00    | .0%   |
| 12801 535297 Refuse Collection           | 2,500    | 0        | 2,500    | 385.31     | .00          | 2,114.69    | 15.4% |
| 12801 535344 Household & Janitorial Supp | 4,000    | 0        | 4,000    | 1,170.31   | .00          | 2,829.69    | 29.3% |
| 12801 535349 Other Supplies              | 11,500   | 0        | 11,500   | 3,106.38   | .00          | 8,393.62    | 27.0% |
| 12801 535352 Vehicle Parts & Repairs     | 5,000    | 0        | 5,000    | 3,076.17   | .00          | 1,923.83    | 61.5% |
| 12801 536533 Equipment Rent & Lease      | 4,000    | 0        | 4,000    | .00        | .00          | 4,000.00    | .0%   |
| 12801 571004 IP Telephony Allocation     | 403      | 0        | 403      | 369.38     | .00          | 33.62       | 91.7% |
| 12801 571005 Duplicating Allocation      | 392      | 0        | 392      | 359.37     | .00          | 32.63       | 91.7% |
| 12801 571009 MIS PC Group Allocation     | 7,247    | 0        | 7,247    | 6,643.12   | .00          | 603.88      | 91.7% |
| 12801 571010 MIS Systems Grp Alloc(ISIS) | 6,818    | 0        | 6,818    | 6,249.87   | .00          | 568.13      | 91.7% |
| 12801 591519 Other Insurance             | 13,229   | 0        | 13,229   | 8,892.62   | .00          | 4,336.66    | 67.2% |
| 12801 594810 Capital Equipment           | 55,500   | 34,500   | 90,000   | 48,908.72  | 17,357.41    | 23,733.87   | 73.6% |
| 12801 594811 Capital Automobiles         | 54,000   | 52,000   | 106,000  | .00        | .00          | 106,000.00  | .0%   |
| 12801 594821 Capital Improvement Land    | 0        | 8,800    | 8,800    | .00        | .00          | 8,800.00    | .0%   |
| 12801 699999 Budgetary Fund Balance      | 0        | -118,900 | -118,900 | .00        | .00          | -118,900.00 | .0%   |
| TOTAL Parks Department                   | 0        | 0        | 0        | -34,893.20 | 26,808.41    | 8,084.79    | .0%   |

04/30/2021  
09:56:37

Jefferson County  
FLEXIBLE PERIOD REPORT

FROM 2021 01 TO 2021 12

ACCOUNTS FOR:  
100 General Fund

| ORIGINAL<br>APPROP | TRANFRS/<br>ADJSTMTS | REVISED<br>BUDGET | ACTUALS | ENCUMBRANCES | AVAILABLE<br>BUDGET | PCT<br>USED |
|--------------------|----------------------|-------------------|---------|--------------|---------------------|-------------|
|--------------------|----------------------|-------------------|---------|--------------|---------------------|-------------|

12802 Carol Liddle Fund

---

|   |         |         |         |        |     |            |     |
|---|---------|---------|---------|--------|-----|------------|-----|
| 12802 481099 Capital Interest & Dividends | 0       | 0       | 0       | -16.01 | .00 | 16.01      | .0% |
| 12802 594960 Capital Reserve              | 86,128  | -27,476 | 58,652  | .00    | .00 | 58,652.13  | .0% |
| 12802 699800 Resv Applied Capital         | -86,128 | 27,476  | -58,652 | .00    | .00 | -58,652.13 | .0% |
| TOTAL Carol Liddle Fund                   | 0       | 0       | 0       | -16.01 | .00 | 16.01      | .0% |

04/30/2021  
09:56:37

Jefferson County  
FLEXIBLE PERIOD REPORT

FROM 2021 01 TO 2021 12

ACCOUNTS FOR:  
100 General Fund

| ORIGINAL<br>APPROP | TRANFRS/<br>ADJSTMTS | REVISED<br>BUDGET | ACTUALS | ENCUMBRANCES | AVAILABLE<br>BUDGET | PCT<br>USED |
|--------------------|----------------------|-------------------|---------|--------------|---------------------|-------------|
|--------------------|----------------------|-------------------|---------|--------------|---------------------|-------------|

12803 Carlin Weld Park Trust

|                                     |        |        |        |           |     |           |       |
|-------------------------------------|--------|--------|--------|-----------|-----|-----------|-------|
| 12803 411100 General Property Taxes | -5,000 | 0      | -5,000 | -1,666.68 | .00 | -3,333.32 | 33.3% |
| 12803 485200 Donations Restricted   | 0      | 0      | 0      | -19.62    | .00 | 19.62     | .0%   |
| 12803 594810 Capital Equipment      | 5,000  | 0      | 5,000  | .00       | .00 | 5,000.00  | .0%   |
| 12803 594950 Operating Reserve      | 0      | 5,676  | 5,676  | .00       | .00 | 5,675.65  | .0%   |
| 12803 699700 Resv Applied Operating | 0      | -5,676 | -5,676 | .00       | .00 | -5,675.65 | .0%   |
| TOTAL Carlin Weld Park Trust        | 0      | 0      | 0      | -1,686.30 | .00 | 1,686.30  | .0%   |

04/30/2021  
09:56:37

Jefferson County  
FLEXIBLE PERIOD REPORT

FROM 2021 01 TO 2021 12

| ACCOUNTS FOR:<br>100 General Fund         | ORIGINAL<br>APPROP | TRANFRS/<br>ADJSTMTS | REVISED<br>BUDGET | ACTUALS   | ENCUMBRANCES | AVAILABLE<br>BUDGET | PCT<br>USED |
|---|--------------------|----------------------|-------------------|-----------|--------------|---------------------|-------------|
| <hr/>                                     |                    |                      |                   |           |              |                     |             |
| 12804 Korth Park Development              |                    |                      |                   |           |              |                     |             |
| 12804 411100 General Property Taxes       | -20,000            | 0                    | -20,000           | -6,666.68 | .00          | -13,333.32          | 33.3%       |
| 12804 485200 Donations Restricted         | 0                  | -337,500             | -337,500          | .00       | .00          | -337,500.00         | .0%         |
| 12804 533222 Electric                     | 0                  | 0                    | 0                 | 185.14    | .00          | -185.14             | .0%         |
| 12804 535247 Building Repair & Maint      | 0                  | 0                    | 0                 | 65.42     | .00          | -65.42              | .0%         |
| 12804 536533 Equipment Rent & Lease       | 0                  | 0                    | 0                 | 270.00    | .00          | -270.00             | .0%         |
| 12804 594808 Capital Land                 | 0                  | 450,000              | 450,000           | .00       | .00          | 450,000.00          | .0%         |
| 12804 594822 Capital Improvement Building | 20,000             | 0                    | 20,000            | .00       | .00          | 20,000.00           | .0%         |
| 12804 699999 Budgetary Fund Balance       | 0                  | -112,500             | -112,500          | .00       | .00          | -112,500.00         | .0%         |
| TOTAL Korth Park Development              | 0                  | 0                    | 0                 | -6,146.12 | .00          | 6,146.12            | .0%         |

04/30/2021  
09:56:37

Jefferson County  
FLEXIBLE PERIOD REPORT

FROM 2021 01 TO 2021 12

ACCOUNTS FOR:  
100 General Fund

| ORIGINAL APPROP | TRANFRS/ ADJSTMTS | REVISED BUDGET | ACTUALS | ENCUMBRANCES | AVAILABLE BUDGET | PCT USED |
|-----------------|-------------------|----------------|---------|--------------|------------------|----------|
|-----------------|-------------------|----------------|---------|--------------|------------------|----------|

12805 Carnes Park Development

|                                      |          |        |          |            |          |             |       |
|--------------------------------------|----------|--------|----------|------------|----------|-------------|-------|
| 12805 482002 Rent Of County Property | -24,000  | 0      | -24,000  | -9,424.00  | .00      | -14,576.00  | 39.3% |
| 12805 485200 Donations Restricted    | 0        | 0      | 0        | -5,133.00  | .00      | 5,133.00    | .0%   |
| 12805 521219 Other Professional Serv | 0        | 0      | 0        | 245.00     | .00      | -245.00     | .0%   |
| 12805 535245 Grounds Improvements    | 0        | 0      | 0        | 3,905.00   | 1,925.00 | -5,830.00   | .0%   |
| 12805 536533 Equipment Rent & Lease  | 0        | 0      | 0        | 270.00     | .00      | -270.00     | .0%   |
| 12805 594950 Operating Reserve       | 253,392  | 4,014  | 257,406  | .00        | .00      | 257,406.18  | .0%   |
| 12805 699700 Resv Applied Operating  | -229,392 | -4,014 | -233,406 | .00        | .00      | -233,406.18 | .0%   |
| TOTAL Carnes Park Development        | 0        | 0      | 0        | -10,137.00 | 1,925.00 | 8,212.00    | .0%   |

04/30/2021  
09:56:37

Jefferson County  
FLEXIBLE PERIOD REPORT

PAGE 7  
gflxrpt

FROM 2021 01 TO 2021 12

| ACCOUNTS FOR:                              | ORIGINAL APPROP | TRANFRS/ ADJSTMTS | REVISED BUDGET | ACTUALS   | ENCUMBRANCES | AVAILABLE BUDGET | PCT USED |
|--|-----------------|-------------------|----------------|-----------|--------------|------------------|----------|
| 100 General Fund                           |                 |                   |                |           |              |                  |          |
| <hr/>                                      |                 |                   |                |           |              |                  |          |
| 12806 Parks Building                       |                 |                   |                |           |              |                  |          |
| 12806 411100 General Property Taxes        | -18,299         | 0                 | -18,299        | -6,099.68 | .00          | -12,199.33       | 33.3%    |
| 12806 521219 22101 Other Professional Serv | 0               | 0                 | 0              | 105.10    | .00          | -105.10          | .0%      |
| 12806 531302 Building & Maint Equipment    | 1,000           | 0                 | 1,000          | .00       | .00          | 1,000.00         | .0%      |
| 12806 531351 Gas/Diesel                    | 3,000           | 0                 | 3,000          | 2,922.63  | .00          | 77.37            | 97.4%    |
| 12806 533221 Water                         | 1,200           | 0                 | 1,200          | 265.71    | .00          | 934.29           | 22.1%    |
| 12806 533222 Electric                      | 5,000           | 0                 | 5,000          | 1,489.32  | .00          | 3,510.68         | 29.8%    |
| 12806 533223 Sewer                         | 1,200           | 0                 | 1,200          | 271.80    | .00          | 928.20           | 22.7%    |
| 12806 533224 Natural Gas                   | 1,000           | 0                 | 1,000          | 179.19    | .00          | 820.81           | 17.9%    |
| 12806 533225 Telephone & Fax               | 600             | 0                 | 600            | 244.80    | .00          | 355.20           | 40.8%    |
| 12806 533235 Storm Water Utility           | 775             | 0                 | 775            | 205.26    | .00          | 569.74           | 26.5%    |
| 12806 533236 Wireless Internet             | 400             | 0                 | 400            | 114.03    | .00          | 285.97           | 28.5%    |
| 12806 535242 Maintain Machinery & Equip    | 1,500           | 0                 | 1,500          | 485.68    | .00          | 1,014.32         | 32.4%    |
| 12806 535247 Building Repair & Maint       | 0               | 0                 | 0              | 73.18     | .00          | -73.18           | .0%      |
| 12806 535349 Other Supplies                | 100             | 0                 | 100            | 229.74    | .00          | -129.74          | 229.7%   |
| 12806 591519 Other Insurance               | 2,524           | 0                 | 2,524          | 2,180.83  | .00          | 343.18           | 86.4%    |
| TOTAL Parks Building                       | 0               | 0                 | 0              | 2,667.59  | .00          | -2,667.59        | .0%      |



04/30/2021  
09:56:37

Jefferson County  
FLEXIBLE PERIOD REPORT

FROM 2021 01 TO 2021 12

ACCOUNTS FOR:  
100 General Fund

| ORIGINAL<br>APPROP | TRANFRS/<br>ADJSTMTS | REVISED<br>BUDGET | ACTUALS | ENCUMBRANCES | AVAILABLE<br>BUDGET | PCT<br>USED |
|--------------------|----------------------|-------------------|---------|--------------|---------------------|-------------|
|--------------------|----------------------|-------------------|---------|--------------|---------------------|-------------|

12807 Garman Nature Preserve

|                                      |         |        |         |           |     |            |      |
|--------------------------------------|---------|--------|---------|-----------|-----|------------|------|
| 12807 521219 Other Professional Serv | 0       | 0      | 0       | 15,884.00 | .00 | -15,884.00 | .0%  |
| 12807 535245 Grounds Improvements    | 28,000  | 0      | 28,000  | 1,213.40  | .00 | 26,786.60  | 4.3% |
| 12807 594950 Operating Reserve       | 0       | 1,306  | 1,306   | .00       | .00 | 1,306.01   | .0%  |
| 12807 699700 Resv Applied Operating  | -28,000 | -1,306 | -29,306 | .00       | .00 | -29,306.01 | .0%  |
| TOTAL Garman Nature Preserve         | 0       | 0      | 0       | 17,097.40 | .00 | -17,097.40 | .0%  |

04/30/2021  
09:56:37

Jefferson County  
FLEXIBLE PERIOD REPORT

FROM 2021 01 TO 2021 12

ACCOUNTS FOR:  
100 General Fund

| ORIGINAL<br>APPROP | TRANFRS/<br>ADJSTMTS | REVISED<br>BUDGET | ACTUALS | ENCUMBRANCES | AVAILABLE<br>BUDGET | PCT<br>USED |
|--------------------|----------------------|-------------------|---------|--------------|---------------------|-------------|
|--------------------|----------------------|-------------------|---------|--------------|---------------------|-------------|

12808 Glacial Heritage Development

|   |         |      |         |     |     |            |     |
|---|---------|------|---------|-----|-----|------------|-----|
| 12808 594821 Capital Improvement Land     | 10,000  | 0    | 10,000  | .00 | .00 | 10,000.00  | .0% |
| 12808 594822 Capital Improvement Building | 5,000   | 0    | 5,000   | .00 | .00 | 5,000.00   | .0% |
| 12808 594950 Operating Reserve            | 3,445   | 991  | 4,436   | .00 | .00 | 4,436.42   | .0% |
| 12808 699700 Resv Applied Operating       | -18,445 | -991 | -19,436 | .00 | .00 | -19,436.42 | .0% |
| TOTAL Glacial Heritage Development        | 0       | 0    | 0       | .00 | .00 | .00        | .0% |

04/30/2021  
09:56:37

Jefferson County  
FLEXIBLE PERIOD REPORT

FROM 2021 01 TO 2021 12

ACCOUNTS FOR:  
100 General Fund

| ORIGINAL<br>APPROP | TRANFRS/<br>ADJSTMTS | REVISED<br>BUDGET | ACTUALS | ENCUMBRANCES | AVAILABLE<br>BUDGET | PCT<br>USED |
|--------------------|----------------------|-------------------|---------|--------------|---------------------|-------------|
|--------------------|----------------------|-------------------|---------|--------------|---------------------|-------------|

12809 Snowmobile Trails

|                                      |         |   |         |       |          |            |     |
|--------------------------------------|---------|---|---------|-------|----------|------------|-----|
| 12809 421001 State Aid               | -57,210 | 0 | -57,210 | .00   | .00      | -57,210.00 | .0% |
| 12809 521219 Other Professional Serv | 0       | 0 | 0       | 96.79 | .00      | -96.79     | .0% |
| 12809 535245 Grounds Improvements    | 57,210  | 0 | 57,210  | .00   | .00      | 57,210.00  | .0% |
| 12809 535349 Other Supplies          | 0       | 0 | 0       | .00   | 2,261.10 | -2,261.10  | .0% |
| TOTAL Snowmobile Trails              | 0       | 0 | 0       | 96.79 | 2,261.10 | -2,357.89  | .0% |

04/30/2021  
09:56:37

Jefferson County  
FLEXIBLE PERIOD REPORT

PAGE 11  
gflxrpt

FROM 2021 01 TO 2021 12

| ACCOUNTS FOR:                              | ORIGINAL<br>APPROP | TRANFRS/<br>ADJSTMTS | REVISED<br>BUDGET | ACTUALS   | ENCUMBRANCES | AVAILABLE<br>BUDGET | PCT<br>USED |
|--|--------------------|----------------------|-------------------|-----------|--------------|---------------------|-------------|
| 100 General Fund                           |                    |                      |                   |           |              |                     |             |
| <hr/>                                      |                    |                      |                   |           |              |                     |             |
| 12810 Bike Trails                          |                    |                      |                   |           |              |                     |             |
| 12810 421099 28101 Capital State Aid       | 0                  | -620,347             | -620,347          | .00       | .00          | -620,347.48         | .0%         |
| 12810 485200 Donations Restricted          | 0                  | 0                    | 0                 | -120.00   | .00          | 120.00              | .0%         |
| 12810 485200 28101 Donations Restricted    | 0                  | 0                    | 0                 | -5,000.00 | .00          | 5,000.00            | .0%         |
| 12810 521219 Other Professional Serv       | 0                  | 0                    | 0                 | 250.00    | .00          | -250.00             | .0%         |
| 12810 533221 Water                         | 0                  | 0                    | 0                 | 11.80     | .00          | -11.80              | .0%         |
| 12810 594821 28101 Capital Improvement Lan | 0                  | 1,216,565            | 1,216,565         | .00       | .00          | 1,216,564.87        | .0%         |
| 12810 699999 Budgetary Fund Balance        | 0                  | -596,217             | -596,217          | .00       | .00          | -596,217.39         | .0%         |
| TOTAL Bike Trails                          | 0                  | 0                    | 0                 | -4,858.20 | .00          | 4,858.20            | .0%         |

04/30/2021  
09:56:37

Jefferson County  
FLEXIBLE PERIOD REPORT

FROM 2021 01 TO 2021 12

ACCOUNTS FOR:  
100 General Fund

| ORIGINAL<br>APPROP | TRANFRS/<br>ADJSTMTS | REVISED<br>BUDGET | ACTUALS | ENCUMBRANCES | AVAILABLE<br>BUDGET | PCT<br>USED |
|--------------------|----------------------|-------------------|---------|--------------|---------------------|-------------|
|--------------------|----------------------|-------------------|---------|--------------|---------------------|-------------|

12810805 Interurban Bike Trail

---

|  |   |   |   |          |           |            |     |
|--|---|---|---|----------|-----------|------------|-----|
| 12810805 485200 Donations Restricted     | 0 | 0 | 0 | -956.41  | .00       | 956.41     | .0% |
| 12810805 594821 Capital Improvement Land | 0 | 0 | 0 | 9,091.85 | 62,780.62 | -71,872.47 | .0% |
| TOTAL Interurban Bike Trail              | 0 | 0 | 0 | 8,135.44 | 62,780.62 | -70,916.06 | .0% |

04/30/2021  
09:56:37

Jefferson County  
FLEXIBLE PERIOD REPORT

PAGE 13  
gflflxprt

FROM 2021 01 TO 2021 12

| ACCOUNTS FOR:                            | ORIGINAL | TRANFRS/ | REVISED | ACTUALS    | ENCUMBRANCES | AVAILABLE  | PCT   |
|--|----------|----------|---------|------------|--------------|------------|-------|
| 100 General Fund                         | APPROP   | ADJSTMTS | BUDGET  |            |              | BUDGET     | USED  |
| <hr/>                                    |          |          |         |            |              |            |       |
| 12811 Dog Park                           |          |          |         |            |              |            |       |
| 12811 451038 Daily Permit Fees           | -5,000   | 0        | -5,000  | -1,004.29  | .00          | -3,995.71  | 20.1% |
| 12811 451039 Annual Permit Fees          | -32,000  | 0        | -32,000 | -23,450.20 | .00          | -8,549.80  | 73.3% |
| 12811 451308 Postage Fees                | 0        | 0        | 0       | -6.45      | .00          | 6.45       | .0%   |
| 12811 457030 Credit Card Surcharge       | 0        | 0        | 0       | -221.53    | .00          | 221.53     | .0%   |
| 12811 485200 Donations Restricted        | 0        | 0        | 0       | -1,117.69  | .00          | 1,117.69   | .0%   |
| 12811 511210 Wages-Regular               | 24,100   | 0        | 24,100  | 5,685.78   | .00          | 18,414.08  | 23.6% |
| 12811 511220 Wages-Overtime              | 0        | 0        | 0       | 1.95       | .00          | -1.95      | .0%   |
| 12811 512141 Social Security             | 1,818    | 0        | 1,818   | 417.39     | .00          | 1,400.94   | 23.0% |
| 12811 512142 Retirement (Employer)       | 1,627    | 0        | 1,627   | 383.93     | .00          | 1,242.81   | 23.6% |
| 12811 512144 Health Insurance            | 3,817    | 0        | 3,817   | 497.29     | .00          | 3,319.71   | 13.0% |
| 12811 512145 Life Insurance              | 21       | 0        | 21      | 9.71       | .00          | 11.29      | 46.2% |
| 12811 512148 Unemployment Compensation   | 2,300    | 0        | 2,300   | .00        | .00          | 2,300.00   | .0%   |
| 12811 512151 HSA Contribution            | 375      | 0        | 375     | 89.06      | .00          | 285.94     | 23.7% |
| 12811 512173 Dental Insurance            | 276      | 0        | 276     | 40.84      | .00          | 235.16     | 14.8% |
| 12811 531311 Postage & Box Rent          | 1,000    | 0        | 1,000   | 464.08     | .00          | 535.92     | 46.4% |
| 12811 531313 Printing & Duplicating      | 500      | 0        | 500     | 32.25      | .00          | 467.75     | 6.5%  |
| 12811 531314 Small Items Of Equipment    | 250      | 0        | 250     | .00        | .00          | 250.00     | .0%   |
| 12811 533236 Wireless Internet           | 480      | 0        | 480     | 45.06      | .00          | 434.94     | 9.4%  |
| 12811 535242 Maintain Machinery & Equip  | 0        | 0        | 0       | 690.84     | .00          | -690.84    | .0%   |
| 12811 535245 Grounds Improvements        | 1,500    | 0        | 1,500   | 21.99      | .00          | 1,478.01   | 1.5%  |
| 12811 535297 Refuse Collection           | 720      | 0        | 720     | 120.30     | .00          | 599.70     | 16.7% |
| 12811 535344 Household & Janitorial Supp | 0        | 0        | 0       | 340.81     | .00          | -340.81    | .0%   |
| 12811 535349 Other Supplies              | 4,000    | 0        | 4,000   | 47.63      | .00          | 3,952.37   | 1.2%  |
| 12811 571005 Duplicating Allocation      | 860      | 0        | 860     | 788.37     | .00          | 71.63      | 91.7% |
| 12811 571009 MIS PC Group Allocation     | 1,208    | 0        | 1,208   | 1,107.37   | .00          | 100.63     | 91.7% |
| 12811 571010 MIS Systems Grp Alloc(ISIS) | 502      | 0        | 502     | 460.13     | .00          | 41.87      | 91.7% |
| 12811 591519 Other Insurance             | 548      | 0        | 548     | 492.36     | .00          | 55.82      | 89.8% |
| 12811 594821 Capital Improvement Land    | 36,000   | 0        | 36,000  | .00        | .00          | 36,000.00  | .0%   |
| 12811 594950 Operating Reserve           | 34,107   | 5,303    | 39,410  | .00        | .00          | 39,410.05  | .0%   |
| 12811 699992 Balance Forward Prior Year  | -79,009  | -5,303   | -84,312 | .00        | .00          | -84,312.16 | .0%   |
| TOTAL Dog Park                           | 0        | 0        | 0       | -14,063.02 | .00          | 14,063.02  | .0%   |

04/30/2021  
09:56:37

Jefferson County  
FLEXIBLE PERIOD REPORT

PAGE 14  
glflxrpt

FROM 2021 01 TO 2021 12

| ACCOUNTS FOR:                              | ORIGINAL | TRANFRS/ | REVISED | ACTUALS   | ENCUMBRANCES | AVAILABLE  | PCT    |
|--|----------|----------|---------|-----------|--------------|------------|--------|
| 100 General Fund                           | APPROP   | ADJSTMTS | BUDGET  |           |              | BUDGET     | USED   |
| <hr/>                                      |          |          |         |           |              |            |        |
| 12812 Grounds Keeping                      |          |          |         |           |              |            |        |
| 12812 411100 General Property Taxes        | -17,625  | 0        | -17,625 | -5,875.00 | .00          | -11,750.00 | 33.3%  |
| 12812 474119 Courthouse Interdepart Billed | -8,947   | 0        | -8,947  | -816.90   | .00          | -8,130.12  | 9.1%   |
| 12812 474150 Human Services Billed         | -13,325  | 0        | -13,325 | -973.30   | .00          | -12,352.17 | 7.3%   |
| 12812 474169 Fair Billed                   | -21,114  | 0        | -21,114 | -1,729.09 | .00          | -19,385.00 | 8.2%   |
| 12812 474170 Land Conservation Billed      | -1,076   | 0        | -1,076  | -74.32    | .00          | -1,001.76  | 6.9%   |
| 12812 474175 Highway Billed                | -10,336  | 0        | -10,336 | -746.17   | .00          | -9,589.95  | 7.2%   |
| 12812 511110 Salary-Permanent Regular      | 3,942    | 0        | 3,942   | 184.45    | .00          | 3,757.33   | 4.7%   |
| 12812 511210 Wages-Regular                 | 34,980   | 0        | 34,980  | 94.06     | .00          | 34,885.70  | .3%    |
| 12812 511330 Wages-Longevity Pay           | 50       | 0        | 50      | .00       | .00          | 50.00      | .0%    |
| 12812 512141 Social Security               | 2,963    | 0        | 2,963   | 21.00     | .00          | 2,942.21   | .7%    |
| 12812 512142 Retirement (Employer)         | 1,983    | 0        | 1,983   | 18.80     | .00          | 1,964.05   | .9%    |
| 12812 512144 Health Insurance              | 4,504    | 0        | 4,504   | 57.76     | .00          | 4,446.05   | 1.3%   |
| 12812 512145 Life Insurance                | 8        | 0        | 8       | .04       | .00          | 8.02       | .5%    |
| 12812 512148 Unemployment Compensation     | 2,500    | 0        | 2,500   | 2,558.40  | .00          | -58.40     | 102.3% |
| 12812 512151 HSA Contribution              | 534      | 0        | 534     | 213.99    | .00          | 320.39     | 40.0%  |
| 12812 512173 Dental Insurance              | 371      | 0        | 371     | 4.60      | .00          | 366.65     | 1.2%   |
| 12812 521219 Other Professional Serv       | 500      | 0        | 500     | .00       | .00          | 500.00     | .0%    |
| 12812 531314 Small Items Of Equipment      | 500      | 0        | 500     | .00       | .00          | 500.00     | .0%    |
| 12812 531320 Safety Supplies               | 500      | 0        | 500     | .00       | .00          | 500.00     | .0%    |
| 12812 531326 Advertising                   | 0        | 0        | 0       | 162.00    | .00          | -162.00    | .0%    |
| 12812 531351 Gas/Diesel                    | 4,850    | 0        | 4,850   | 53.86     | .00          | 4,796.14   | 1.1%   |
| 12812 535242 Maintain Machinery & Equip    | 2,500    | 0        | 2,500   | 711.48    | .00          | 1,788.52   | 28.5%  |
| 12812 535245 Grounds Improvements          | 5,000    | 0        | 5,000   | 136.00    | .00          | 4,864.00   | 2.7%   |
| 12812 535349 Other Supplies                | 3,000    | 0        | 3,000   | .00       | .00          | 3,000.00   | .0%    |
| 12812 535352 Vehicle Parts & Repairs       | 1,200    | 0        | 1,200   | 127.99    | .00          | 1,072.01   | 10.7%  |
| 12812 536533 Equipment Rent & Lease        | 300      | 0        | 300     | .00       | .00          | 300.00     | .0%    |
| 12812 571010 MIS Systems Grp Alloc(ISIS)   | 656      | 0        | 656     | 601.37    | .00          | 54.63      | 91.7%  |
| 12812 591519 Other Insurance               | 1,583    | 0        | 1,583   | 1,003.20  | .00          | 579.48     | 63.4%  |
| TOTAL Grounds Keeping                      | 0        | 0        | 0       | -4,265.78 | .00          | 4,265.78   | .0%    |

04/30/2021  
09:56:37

Jefferson County  
FLEXIBLE PERIOD REPORT

PAGE 15  
gflxrpt

FROM 2021 01 TO 2021 12

ACCOUNTS FOR:  
100 General Fund

| ORIGINAL<br>APPROP | TRANFRS/<br>ADJSTMTS | REVISED<br>BUDGET | ACTUALS | ENCUMBRANCES | AVAILABLE<br>BUDGET | PCT<br>USED |
|--------------------|----------------------|-------------------|---------|--------------|---------------------|-------------|
|--------------------|----------------------|-------------------|---------|--------------|---------------------|-------------|

12812371 Facilities-Courthouse

|                                       |   |   |   |          |     |           |     |
|---------------------------------------|---|---|---|----------|-----|-----------|-----|
| 12812371 511210 Wages-Regular         | 0 | 0 | 0 | 2,323.53 | .00 | -2,323.53 | .0% |
| 12812371 511220 Wages-Overtime        | 0 | 0 | 0 | 50.53    | .00 | -50.53    | .0% |
| 12812371 512141 Social Security       | 0 | 0 | 0 | 179.16   | .00 | -179.16   | .0% |
| 12812371 512142 Retirement (Employer) | 0 | 0 | 0 | 155.01   | .00 | -155.01   | .0% |
| 12812371 512144 Health Insurance      | 0 | 0 | 0 | 369.68   | .00 | -369.68   | .0% |
| 12812371 512145 Life Insurance        | 0 | 0 | 0 | .35      | .00 | -.35      | .0% |
| 12812371 512173 Dental Insurance      | 0 | 0 | 0 | 22.14    | .00 | -22.14    | .0% |
| 12812371 535349 Other Supplies        | 0 | 0 | 0 | 1,442.20 | .00 | -1,442.20 | .0% |
| 12812371 594810 Capital Equipment     | 0 | 0 | 0 | 760.00   | .00 | -760.00   | .0% |
| TOTAL Facilities-Courthouse           | 0 | 0 | 0 | 5,302.60 | .00 | -5,302.60 | .0% |



04/30/2021  
09:56:37

Jefferson County  
FLEXIBLE PERIOD REPORT

PAGE 16  
gflxrpt

FROM 2021 01 TO 2021 12

ACCOUNTS FOR:  
100 General Fund

| ORIGINAL<br>APPROP | TRANFRS/<br>ADJSTMTS | REVISED<br>BUDGET | ACTUALS | ENCUMBRANCES | AVAILABLE<br>BUDGET | PCT<br>USED |
|--------------------|----------------------|-------------------|---------|--------------|---------------------|-------------|
|--------------------|----------------------|-------------------|---------|--------------|---------------------|-------------|

12812380 Facilities-Fair Park

|                                       |   |   |   |          |     |           |     |
|---------------------------------------|---|---|---|----------|-----|-----------|-----|
| 12812380 511210 Wages-Regular         | 0 | 0 | 0 | 630.39   | .00 | -630.39   | .0% |
| 12812380 512141 Social Security       | 0 | 0 | 0 | 48.22    | .00 | -48.22    | .0% |
| 12812380 512142 Retirement (Employer) | 0 | 0 | 0 | 22.81    | .00 | -22.81    | .0% |
| 12812380 512144 Health Insurance      | 0 | 0 | 0 | 2.32     | .00 | -2.32     | .0% |
| 12812380 512173 Dental Insurance      | 0 | 0 | 0 | .12      | .00 | -.12      | .0% |
| 12812380 535349 Other Supplies        | 0 | 0 | 0 | 80.00    | .00 | -80.00    | .0% |
| 12812380 594810 Capital Equipment     | 0 | 0 | 0 | 760.00   | .00 | -760.00   | .0% |
| TOTAL Facilities-Fair Park            | 0 | 0 | 0 | 1,543.86 | .00 | -1,543.86 | .0% |

04/30/2021  
09:56:37

Jefferson County  
FLEXIBLE PERIOD REPORT

PAGE 17  
gflxrpt

FROM 2021 01 TO 2021 12

ACCOUNTS FOR:  
100 General Fund

| ORIGINAL<br>APPROP | TRANFRS/<br>ADJSTMTS | REVISED<br>BUDGET | ACTUALS | ENCUMBRANCES | AVAILABLE<br>BUDGET | PCT<br>USED |
|--------------------|----------------------|-------------------|---------|--------------|---------------------|-------------|
|--------------------|----------------------|-------------------|---------|--------------|---------------------|-------------|

12812381 Facilities-Hwy

|                                       |   |   |   |        |     |         |     |
|---------------------------------------|---|---|---|--------|-----|---------|-----|
| 12812381 511210 Wages-Regular         | 0 | 0 | 0 | 704.46 | .00 | -704.46 | .0% |
| 12812381 512141 Social Security       | 0 | 0 | 0 | 52.99  | .00 | -52.99  | .0% |
| 12812381 512142 Retirement (Employer) | 0 | 0 | 0 | 37.03  | .00 | -37.03  | .0% |
| 12812381 512144 Health Insurance      | 0 | 0 | 0 | 101.35 | .00 | -101.35 | .0% |
| 12812381 512173 Dental Insurance      | 0 | 0 | 0 | 15.33  | .00 | -15.33  | .0% |
| TOTAL Facilities-Hwy                  | 0 | 0 | 0 | 911.16 | .00 | -911.16 | .0% |

04/30/2021  
09:56:37

Jefferson County  
FLEXIBLE PERIOD REPORT

PAGE 18  
gflxrpt

FROM 2021 01 TO 2021 12

ACCOUNTS FOR:  
100 General Fund

| ORIGINAL<br>APPROP | TRANFRS/<br>ADJSTMTS | REVISED<br>BUDGET | ACTUALS | ENCUMBRANCES | AVAILABLE<br>BUDGET | PCT<br>USED |
|--------------------|----------------------|-------------------|---------|--------------|---------------------|-------------|
|--------------------|----------------------|-------------------|---------|--------------|---------------------|-------------|

12812383 Facilities-HHS & Lueder House

|                                       |   |   |   |        |     |         |     |
|---------------------------------------|---|---|---|--------|-----|---------|-----|
| 12812383 511210 Wages-Regular         | 0 | 0 | 0 | 413.17 | .00 | -413.17 | .0% |
| 12812383 512141 Social Security       | 0 | 0 | 0 | 31.56  | .00 | -31.56  | .0% |
| 12812383 512142 Retirement (Employer) | 0 | 0 | 0 | 17.89  | .00 | -17.89  | .0% |
| 12812383 512144 Health Insurance      | 0 | 0 | 0 | 13.56  | .00 | -13.56  | .0% |
| 12812383 512145 Life Insurance        | 0 | 0 | 0 | .01    | .00 | -.01    | .0% |
| 12812383 512173 Dental Insurance      | 0 | 0 | 0 | 1.06   | .00 | -1.06   | .0% |
| TOTAL Facilities-HHS & Lueder House   | 0 | 0 | 0 | 477.25 | .00 | -477.25 | .0% |

04/30/2021  
09:56:37

Jefferson County  
FLEXIBLE PERIOD REPORT

PAGE 19  
gflxrpt

FROM 2021 01 TO 2021 12

ACCOUNTS FOR:  
100 General Fund

| ORIGINAL<br>APPROP | TRANFRS/<br>ADJSTMTS | REVISED<br>BUDGET | ACTUALS | ENCUMBRANCES | AVAILABLE<br>BUDGET | PCT<br>USED |
|--------------------|----------------------|-------------------|---------|--------------|---------------------|-------------|
|--------------------|----------------------|-------------------|---------|--------------|---------------------|-------------|

12812394 Facilites-UW-Ext & Wrk Dev

|                                       |   |   |   |       |     |        |     |
|---------------------------------------|---|---|---|-------|-----|--------|-----|
| 12812394 511210 Wages-Regular         | 0 | 0 | 0 | 43.31 | .00 | -43.31 | .0% |
| 12812394 512141 Social Security       | 0 | 0 | 0 | 3.29  | .00 | -3.29  | .0% |
| 12812394 512142 Retirement (Employer) | 0 | 0 | 0 | 2.92  | .00 | -2.92  | .0% |
| 12812394 512144 Health Insurance      | 0 | 0 | 0 | 7.12  | .00 | -7.12  | .0% |
| 12812394 512145 Life Insurance        | 0 | 0 | 0 | .01   | .00 | -.01   | .0% |
| TOTAL Facilites-UW-Ext & Wrk Dev      | 0 | 0 | 0 | 56.65 | .00 | -56.65 | .0% |

04/30/2021  
09:56:37

Jefferson County  
FLEXIBLE PERIOD REPORT

PAGE 20  
gflxrpt

FROM 2021 01 TO 2021 12

ACCOUNTS FOR:  
100 General Fund

|                                     | ORIGINAL<br>APPROP | TRANFRS/<br>ADJSTMTS | REVISED<br>BUDGET | ACTUALS    | ENCUMBRANCES | AVAILABLE<br>BUDGET | PCT<br>USED |
|-------------------------------------|--------------------|----------------------|-------------------|------------|--------------|---------------------|-------------|
| <hr/>                               |                    |                      |                   |            |              |                     |             |
| 12813 Flood Mitigation Prop Maint   |                    |                      |                   |            |              |                     |             |
| 12813 411100 General Property Taxes | -45,870            | 0                    | -45,870           | -15,290.00 | .00          | -30,580.00          | 33.3%       |
| 12813 511210 Wages-Regular          | 0                  | 0                    | 0                 | 356.81     | .00          | -356.81             | .0%         |
| 12813 511220 Wages-Overtime         | 0                  | 0                    | 0                 | .21        | .00          | -.21                | .0%         |
| 12813 512141 Social Security        | 0                  | 0                    | 0                 | 25.42      | .00          | -25.42              | .0%         |
| 12813 512142 Retirement (Employer)  | 0                  | 0                    | 0                 | 24.11      | .00          | -24.11              | .0%         |
| 12813 512144 Health Insurance       | 0                  | 0                    | 0                 | 52.36      | .00          | -52.36              | .0%         |
| 12813 512145 Life Insurance         | 0                  | 0                    | 0                 | .21        | .00          | -.21                | .0%         |
| 12813 512151 HSA Contribution       | 0                  | 0                    | 0                 | 9.37       | .00          | -9.37               | .0%         |
| 12813 512173 Dental Insurance       | 0                  | 0                    | 0                 | 4.31       | .00          | -4.31               | .0%         |
| 12813 521220 Consultant             | 25,000             | 10,000               | 35,000            | .00        | .00          | 35,000.00           | .0%         |
| 12813 535245 Grounds Improvements   | 20,870             | 0                    | 20,870            | 16,800.00  | .00          | 4,070.00            | 80.5%       |
| 12813 699999 Budgetary Fund Balance | 0                  | -10,000              | -10,000           | .00        | .00          | -10,000.00          | .0%         |
| TOTAL Flood Mitigation Prop Maint   | 0                  | 0                    | 0                 | 1,982.80   | .00          | -1,982.80           | .0%         |

04/30/2021  
09:56:37

Jefferson County  
FLEXIBLE PERIOD REPORT

FROM 2021 01 TO 2021 12

ACCOUNTS FOR:  
100 General Fund

| ORIGINAL<br>APPROP | TRANFRS/<br>ADJSTMTS | REVISED<br>BUDGET | ACTUALS | ENCUMBRANCES | AVAILABLE<br>BUDGET | PCT<br>USED |
|--------------------|----------------------|-------------------|---------|--------------|---------------------|-------------|
|--------------------|----------------------|-------------------|---------|--------------|---------------------|-------------|

12815 Blackhawk Island Fishing Wharf

|                                      |   |   |   |       |     |        |     |
|--------------------------------------|---|---|---|-------|-----|--------|-----|
| 12815 535245 Grounds Improvements    | 0 | 0 | 0 | 31.67 | .00 | -31.67 | .0% |
| TOTAL Blackhawk Island Fishing Wharf | 0 | 0 | 0 | 31.67 | .00 | -31.67 | .0% |

04/30/2021  
09:56:37

Jefferson County  
FLEXIBLE PERIOD REPORT

FROM 2021 01 TO 2021 12

ACCOUNTS FOR:  
100 General Fund

| ORIGINAL<br>APPROP | TRANFRS/<br>ADJSTMTS | REVISED<br>BUDGET | ACTUALS | ENCUMBRANCES | AVAILABLE<br>BUDGET | PCT<br>USED |
|--------------------|----------------------|-------------------|---------|--------------|---------------------|-------------|
|--------------------|----------------------|-------------------|---------|--------------|---------------------|-------------|

12816 Burnt Village Hist Site & Lauc

|                                      |   |   |   |        |     |       |     |
|--------------------------------------|---|---|---|--------|-----|-------|-----|
| 12816 485200 Donations Restricted    | 0 | 0 | 0 | -29.59 | .00 | 29.59 | .0% |
| TOTAL Burnt Village Hist Site & Lauc | 0 | 0 | 0 | -29.59 | .00 | 29.59 | .0% |

04/30/2021  
09:56:37

Jefferson County  
FLEXIBLE PERIOD REPORT

FROM 2021 01 TO 2021 12

ACCOUNTS FOR:  
100 General Fund

| ORIGINAL<br>APPROP | TRANFRS/<br>ADJSTMTS | REVISED<br>BUDGET | ACTUALS | ENCUMBRANCES | AVAILABLE<br>BUDGET | PCT<br>USED |
|--------------------|----------------------|-------------------|---------|--------------|---------------------|-------------|
|--------------------|----------------------|-------------------|---------|--------------|---------------------|-------------|

12817 Cappies Landing

---

|                                      |   |   |   |       |     |        |     |
|--------------------------------------|---|---|---|-------|-----|--------|-----|
| 12817 521219 Other Professional Serv | 0 | 0 | 0 | 30.00 | .00 | -30.00 | .0% |
| TOTAL Cappies Landing                | 0 | 0 | 0 | 30.00 | .00 | -30.00 | .0% |



04/30/2021  
09:56:37

Jefferson County  
FLEXIBLE PERIOD REPORT

FROM 2021 01 TO 2021 12

ACCOUNTS FOR:  
100 General Fund

| ORIGINAL<br>APPROP | TRANFRS/<br>ADJSTMTS | REVISED<br>BUDGET | ACTUALS | ENCUMBRANCES | AVAILABLE<br>BUDGET | PCT<br>USED |
|--------------------|----------------------|-------------------|---------|--------------|---------------------|-------------|
|--------------------|----------------------|-------------------|---------|--------------|---------------------|-------------|

12820 Hwy 16 Landing

---

|                                      |   |   |   |       |     |        |     |
|--------------------------------------|---|---|---|-------|-----|--------|-----|
| 12820 535247 Building Repair & Maint | 0 | 0 | 0 | 31.73 | .00 | -31.73 | .0% |
| TOTAL Hwy 16 Landing                 | 0 | 0 | 0 | 31.73 | .00 | -31.73 | .0% |

04/30/2021  
09:56:37

Jefferson County  
FLEXIBLE PERIOD REPORT

FROM 2021 01 TO 2021 12

ACCOUNTS FOR:  
100 General Fund

| ORIGINAL<br>APPROP | TRANFRS/<br>ADJSTMTS | REVISED<br>BUDGET | ACTUALS | ENCUMBRANCES | AVAILABLE<br>BUDGET | PCT<br>USED |
|--------------------|----------------------|-------------------|---------|--------------|---------------------|-------------|
|--------------------|----------------------|-------------------|---------|--------------|---------------------|-------------|

12826 Rock Lake County Park

---

|                                   |   |   |   |        |     |         |     |
|-----------------------------------|---|---|---|--------|-----|---------|-----|
| 12826 533222 Electric             | 0 | 0 | 0 | 154.25 | .00 | -154.25 | .0% |
| 12826 535245 Grounds Improvements | 0 | 0 | 0 | 8.56   | .00 | -8.56   | .0% |
| TOTAL Rock Lake County Park       | 0 | 0 | 0 | 162.81 | .00 | -162.81 | .0% |

04/30/2021  
09:56:37

Jefferson County  
FLEXIBLE PERIOD REPORT

FROM 2021 01 TO 2021 12

ACCOUNTS FOR:  
100 General Fund

| ORIGINAL<br>APPROP | TRANFRS/<br>ADJSTMTS | REVISED<br>BUDGET | ACTUALS | ENCUMBRANCES | AVAILABLE<br>BUDGET | PCT<br>USED |
|--------------------|----------------------|-------------------|---------|--------------|---------------------|-------------|
|--------------------|----------------------|-------------------|---------|--------------|---------------------|-------------|

12827 Rock River County Park

|                                      |            |            |            |             |           |               |     |
|--------------------------------------|------------|------------|------------|-------------|-----------|---------------|-----|
| 12827 521219 Other Professional Serv | 0          | 0          | 0          | 30.00       | .00       | -30.00        | .0% |
| TOTAL Rock River County Park         | 0          | 0          | 0          | 30.00       | .00       | -30.00        | .0% |
| TOTAL General Fund                   | 0          | 0          | 0          | -37,537.47  | 93,775.13 | -56,237.66    | .0% |
| TOTAL REVENUES                       | -1,528,242 | -1,785,279 | -3,313,521 | -372,124.95 | .00       | -2,941,396.15 |     |
| TOTAL EXPENSES                       | 1,528,242  | 1,785,279  | 3,313,521  | 334,587.48  | 93,775.13 | 2,885,158.49  |     |

04/30/2021  
09:56:37

Jefferson County  
FLEXIBLE PERIOD REPORT

FROM 2021 01 TO 2021 12

|             | ORIGINAL<br>APPROP | TRANFRS/<br>ADJSTMTS | REVISED<br>BUDGET | ACTUALS    | ENCUMBRANCES | AVAILABLE<br>BUDGET | PCT<br>USED |
|-------------|--------------------|----------------------|-------------------|------------|--------------|---------------------|-------------|
| GRAND TOTAL | 0                  | 0                    | 0                 | -37,537.47 | 93,775.13    | -56,237.66          | .0%         |